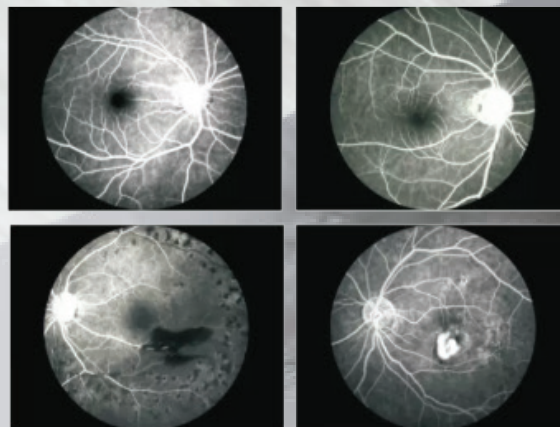
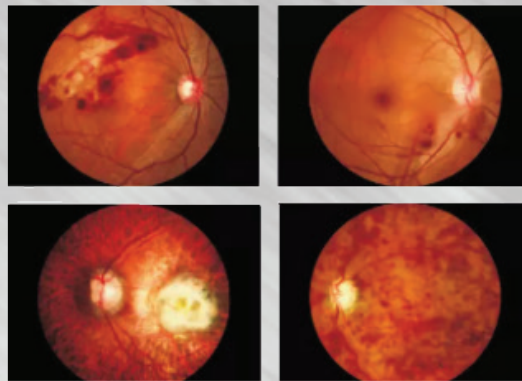




ESK-650A

ESK-650B

Fundus camera



OPHTHALMOLOGY / ENT

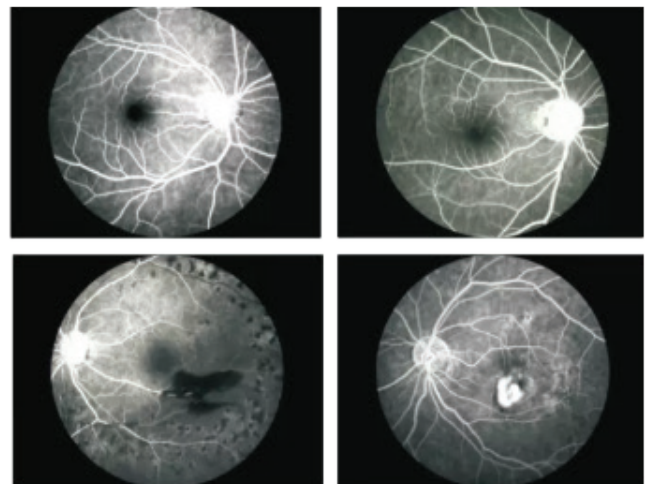
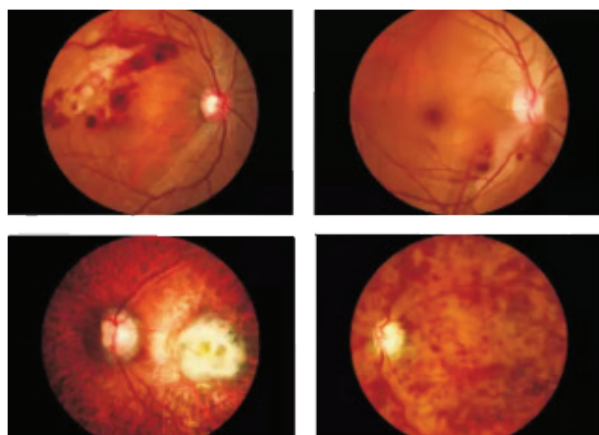


ESK-650

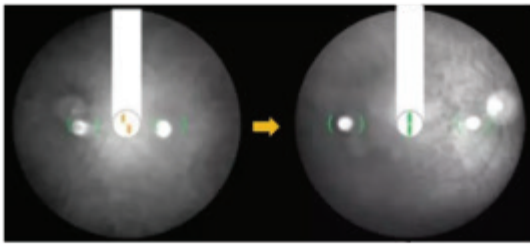
Description

ESK-650A With color fundus image

ESK-650B with Color fundus image and FFA ,digital fundus fluorescein angiography function

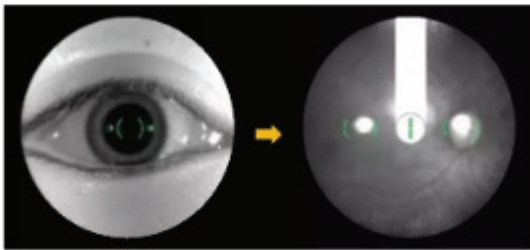


Features



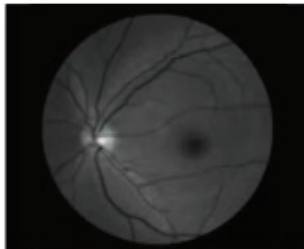
Split-line aligning focus

Objective indication of focus status



Switching Anterior-posterior Para-position

Para-position fundus easily



Red-Free

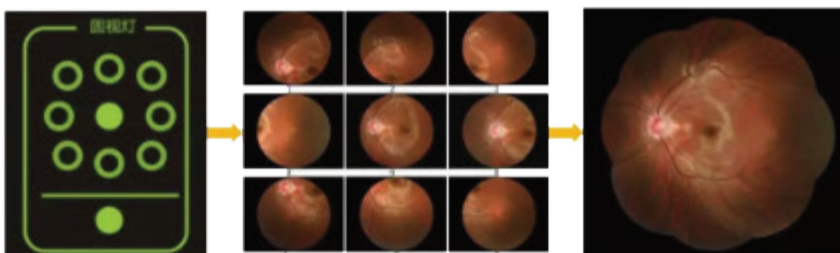
Obvious comparison of nerve fiber layer, helps diagnose glaucoma



45° full circle design

New optical design guarantee 45° full circle image
avoid losing fundus information

Auto Mosaic+9 Internal fixation Target



Features



Visible light alignment

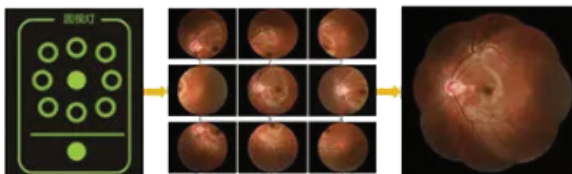
Find the location of the fundus more conveniently



Bias design

FFA operation more convenient

Auto Mosaic+9 Internal fixation Target



Specifications

Model	ESK-650A	ESK-650B
Optical Lens Type	None Aspheric System	
Test Mode	None Mydriatic-Fundus	
Fundus Observation	Switching Anterior-posterior Para-position	Moved platform
Focus	Split-line aligning focusing	
Fundus Observation para-position indication	Dots overlap	
Digital Camera	Canon EOS Technology	
Color image capture	5184*3456	
Monochrome image resolution	/	1360*1024
Minimum Pupil Size	3.3mm	
Compensation range	-25D ~ +25D	
Fixation	9 Internal fixation target	9 internal fixation target + external eye fixation
Max angle of view	45°	
Optical head tilting	/	Horizontal ± 30° Vertical ± 12.5°
Working Distance	40mm ±2mm	
Software	Support Dicom 3.0, support Hospital HIS/PACS system, Support Fundus Mosaic, Image processing, Measurement, patient profile management	